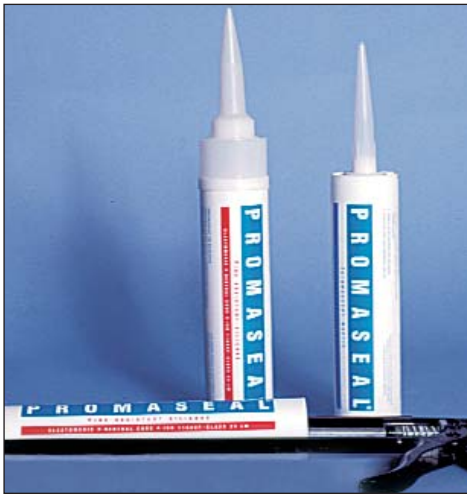




PRODUCT DESCRIPTION

PROMASEAL® Intumescent Sealant is a white or grey water-based acrylic intumescent sealant supplied in a 310ml cartridge. PROMASEAL® Silicone Sealant is a silicone-based fire protection sealant, available in white, grey or black, supplied in 310ml cartridges. Adhesion is excellent to most types of surface. The sealants cure in air to form a non-hardening, tack-free seal, preventing the passage of smoke, toxic gases and fire.



APPLICATIONS

Both PROMASEAL® Intumescent Sealant and PROMASEAL® Silicone Sealant are suitable for sealing small gaps and holes in applications requiring up to 240 minutes fire resistance.

PROMASEAL® Intumescent Sealant is suitable for most applications but the PROMASEAL® Silicone Sealant would be required for service temperatures over 70°C or where increased joint movement capability is needed.

FIRE PERFORMANCE

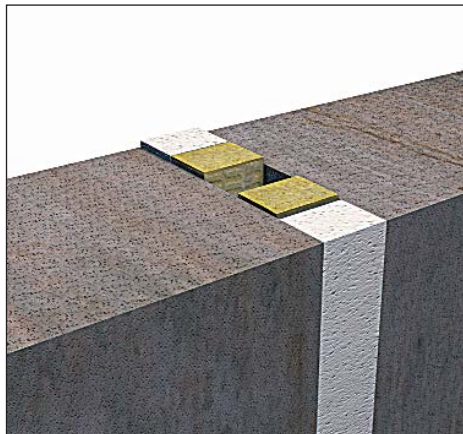
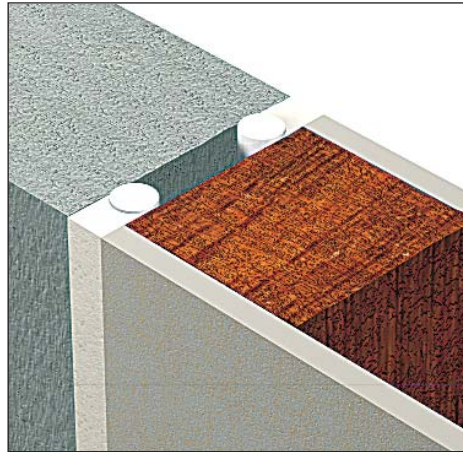
The fire performance of PROMASEAL® Sealants will vary according to the particular application, the surrounding substrates, the depth of sealant applied and the amount of sealant exposed to heat.

PROMASEAL® Sealants have been tested to the procedures and adopting the criteria of BS 476: Part 20: 1987. Please note that if the fire risk is from both sides of the gap, then the systems described above should be installed on both sides. For situations not covered by the above, please consult the Promat Technical Services Department.

PROMASEAL® INTUMESCENT SEALANT (Using polyethylene backing material)

For gaps up to 25mm wide with steel, concrete or masonry substrates, the depth of the sealant should be equivalent to

the gap width to provide at least 240 minutes fire resistance (integrity only).



Note: If a fire is from both sides of the gap, then the sealant should be inserted on both sides.

PROMASEAL® SILICONE SEALANT (Using mineral or ceramic backing material)

Concrete or Masonry Substrates

For gaps up to 100mm wide with concrete or masonry substrates, the depth of the sealant should be equivalent to half the gap width to provide at least 240 minutes fire resistance (integrity only).

Timber Substrates

For gaps up to 25mm wide with timber substrates, the depth of sealant should be 35mm (soft wood) or 25mm (hardwoods) to provide at least 60 minutes fire resistance (integrity only).

Advantages

- Good movement capability
- Suitable for joints up to 100 mm wide
- Tack-free
- Flexible
- Fire tested up to 240 minutes
- Good adhesion to most building products
- Will not slump
- Can be overpainted (intumescent only)
- Halogen free
- Suitable for internal and semi-exposed applications



INSTALLATION

PROMASEAL® Sealants will adhere to most construction materials. If in doubt, the sealant should be applied to a small length of joint and examined, or the Promat Technical Services Department should be contacted.

All surfaces should be clean, dry, oil and grease-free, although very porous surfaces may need to be wetted with clean water to prevent too rapid drying of the sealant before proper cure.

Surfaces should also be free of dust and friable particles. Any loose paint should be removed from steel. It is advisable to tool the sealant firmly against the joint faces and the sealant can be dressed off with a wetted trowel.

PAINTING

PROMASEAL® Intumescent Sealant can be overpainted after approximately 48 hours (dependent on ambient conditions). Consideration should be given to the flexibility of the finished painted coat when movement is expected.

PROMASEAL® Silicone Sealant cannot be overpainted.

QUANTITY REQUIRED

PROMASEAL® Sealants are packaged in 310 ml cartridges. To calculate the approximate number of cartridges required, use the following formula:

No. of cartridges required =

$$\frac{\text{Joint length (m)} \times \text{joint width (mm)} \times \text{sealant depth (mm)}}{310}$$

This does not allow for wastage. Please note that joint length is in metres but joint width and sealant depth are in millimetres.

DELIVERY FORM

Cartridges in boxes of either 12 or 25.

HEALTH AND SAFETY

Health and Safety data sheets for this product are available from Promat.

PROMASEAL® Silicone Sealant should not be used for food-grade applications, and should not be in contact with acids, oxidising agents or with materials that can exude certain components over a period of time.

INTUMESCENT SEALANT FIRE RATING TABLE

Joint Size Width x Depth (mm)	Joint Configuration	Integrity Rating (mins)	Insulation Rating (mins)
6 x 10	Single Seal	120	30
6 x 10	Double Seal	240	240
10 x 10	Single Seal	120	30
10 x 10	Double Seal	240	240
15 x 10	Single Seal	120	30
15 x 10	Double Seal	240	240
20 x 10	Single Seal	120	30
20 x 10	Double Seal	240	240
25 x 10	Single Seal	120	30
25 x 10	Double Seal	240	240

Note: Backing required of either closed cell polyethylene backer rod (35kg/m³) or mineral fibre (90kg/m³)

SILICONE SEALANT FIRE RATING TABLE

Joint Size Width x Depth (mm)	Joint Configuration	Integrity Rating (mins)	Insulation Rating (mins)
6 x 10	Single Seal	60	30
6 x 10	Double Seal	240	240
10 x 12	Single Seal	60	30
10 x 10	Double Seal	240	240
15 x 15	Single Seal	120	90
15 x 10	Double Seal	240	240
20 x 15	Single Seal	120	90
20 x 10	Double Seal	240	240
25 x 20	Single Seal	120	90
25 x 10	Double Seal	240	240
26 – 100 x 10	Double Seal	240	240

Note: Backing required of closed cell polyethylene backer rod (35kg/m³)

PHYSICAL PROPERTIES

Property	PROMASEAL® Intumescent	PROMASEAL® Silicone
Sealant base	Water-based acrylic	Silicone
Cure system	Water loss	Oxime
Speed of Cure (23°C, 50% RH)	-	4mm/day approx. 10mm/6 days approx.
Skin over time (23°C, 50%RH)	minimum 15 minutes	minimum 15 minutes
Overpaint times	48 hours	N/A
Application temperature range	+5 to +30°C	+5 to +30°C
Service temperature range	-20 to +70°C	-30 to +150°C
Joint movement capability	± 20%	± 50%
Slump	Nil at joints up to 28mm	Nil at joints up to 28mm
Elongation at break	N/A	250%
Expansion in fire conditions	300%	N/A
Shelf life when stored between 5°C to 30°C	12 months	12 months